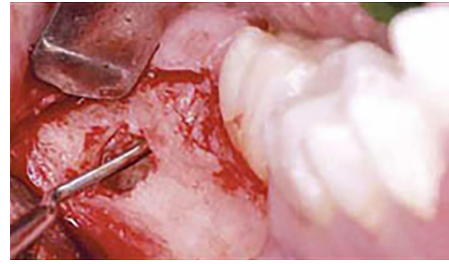


# Bony regeneration in the socket of the wisdom tooth



1. Unstick a vestibular strip full thickness cut sides of a window of exploratory osteotomy according to the radiographic data.



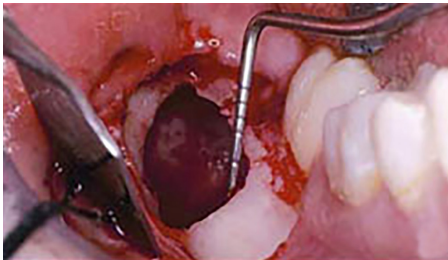
2. You remove the splinter of bone cortical center of the window and explore the space with a dental probe follicular.



3. It extends the osteotomy and run a first vertical odontotomy a a livello del colletto to be able to remove the crown then.



4. You run a new section plane separating the lower from the upper root and remove the two separate roots.



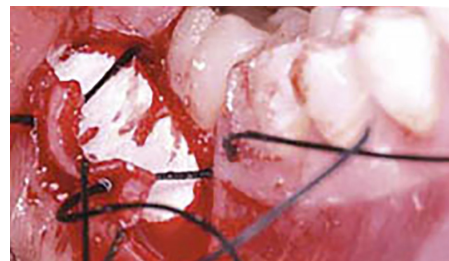
5. Control with a periodontal probe blunt the alveolus that presents in this case a continuity with the mandibular canal.



6. Adapts a membrane at the bottom of the socket to have a barrier effect and prevent the intrusion of hydroxylapatite in the channel.



7. With a spingidrossilapatite fills the cavity with a controlled pressure to avoid forcing the membrane into the channel.



8. Apply another membrane for GBR over the margins of the osteotomy to stabilize the hydroxylapatite osteoinductive.

The clinical trial